



SAHE eNewsletter, October 2010

## Student Affairs in Higher Education

Thank you for your interest in the SAHE Graduate Program at Colorado State University (CSU)! We would like to keep you up-to-date on the SAHE program by sending you our monthly eNewsletters. Be on the lookout for future issues, which will include more on cohorts, selection, placement, practice and more!



## Application Deadline:

The application deadline for Fall 2011 is **Wednesday, January 5, 2011**. If you are interested in applying to CSU's Student Affairs in Higher Education Program, the application is available after September 1, 2010 at [www.sahe.colostate.edu](http://www.sahe.colostate.edu). If you have general questions about the SAHE Program, please email:

[SAHE@colostate.edu](mailto:SAHE@colostate.edu)

## STUDENT PROFILE: Nidhi Lahoti, Class of 2012

Hi! I graduated in June from The Ohio State University in Columbus, Ohio. So, obviously I started the program straight from undergrad. I majored in Political Science with minors in Psychology and Entrepreneurship, but quickly realized that being a campaign manager was not for me. I began asking my supervisors and student organization advisors how they managed to get paid for working at a university and soon discovered Student Affairs. It was love at first sight. My assistantship is in Campus Activities as one of the ASAP (Associated Student Activities Programming) Graduate Advisors. ASAP is the premier student programming board on campus, planning and implementing over 50 events each semester. As a new graduate student I am still trying to figure out how many activities I can take on in addition to my assistantship and classes so right now I am only involved in Go SAHE which organizes social events for both cohorts. My first semester so far has been a roller coaster ride, but I have not felt alone here at all. Everyone in Campus Activities and the entire faculty are incredibly supportive whether you need help at work, in class or personally. Not only am I learning things I can apply immediately in my assistantship, but I am learning so much about myself and who I want to be as a professional. I am truly grateful to be a student in SAHE and can not wait to call myself a graduate of the program.



## FACULTY PROFILE: Blanche Hughes, Vice President for Student Affairs

I grew up in Lexington, Kentucky and moved to Colorado the summer of 1982. I co-teach the Inclusive University course with Linda Ahuna-Hamill. I enjoy advising SAHE students and sitting on their graduate committees. I have an undergraduate degree in Physical Education from Earlham College, a master's of education degree in College Student Personnel from Colorado State (the current SAHE program), and a doctorate in Sociology from Colorado State University. I serve as the Vice President for Student Affairs. I am married and have four children and three granddaughters.



# The Places You Could Go!

## WORDS FROM ALUMNI:

Ray Gasser, PhD

SAHE Class of 2000

Director of Housing, University of Idaho

"The SAHE program at Colorado State University was a defining moment in my career. The courses are grounded in theory yet are taught by practitioners making the curriculum much more applicable to career-minded students. I continue to apply many of the principles of the program to my career and continue to maintain strong relationships with the program and many of the faculty. I believe the SAHE program to be one of the strongest programs in the country for those seeking career based application. I recommend it highly for those seeking such attributes."

## Joe Levy, Class of 2010—StudentVoice



"For my job search, I knew what I wanted and I trusted I would recognize the right opportunity, regardless of where or what that may be. I accepted a position as an Assistant Director of Assessment Programs with StudentVoice, a company who provides assessment solutions for more than 300 higher education institutions. I serve as an Assessment Consultant for over 20 institutions across North America, assisting with anything and everything related to assessment: helping plan and design projects, assisting with interpreting and using data for change, and I also assist campuses developing strategic plans, goals, and outcomes for their institutions. I have the opportunity to work with executive-level student affairs professionals, as well as gain exposure to a vast array of offices, departments, and functional areas within different institutional types. I also have the pleasure of working with an extremely motivated and fun group of folks within my office, giving me the duality of satisfying professional relationships both in-house and across North America! While I do not work on a campus, I have the pleasure of working with multiple campuses doing rewarding work that, not only do I enjoy and have a knack for, but allows me to help a variety of professionals with their work. I could not imagine a better fit for me professionally and would encourage folks not to be afraid to step outside the box of traditional higher education when looking for professional opportunities."

## Congratulations!

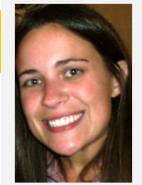
**Jody Donovan**  
(SAHE Faculty)  
Winner of NASPA  
IV-W Outstanding  
Faculty Member Award!



**Kacee Collard  
Jarnot**  
(SAHE '09)  
Winner of NASPA IV-W  
Outstanding New  
Professional Award!



## Lisa LaPoint, Class of 2011—Academic Impressions



"Through the incredible SAHE alumni network, I was able to secure a summer practicum with Academic Impressions in Denver, affording me an experience like no other. AI supports professional development in higher education through webinars and multi-day live conferences. I was charged with conducting research on various topics – study abroad, student health insurance, international programs, and library/IT services – and creating proposals for web conferences with the potential to be viewed by hundreds of student affairs professionals. Imagine a class where the professor tells you to pick a topic and call 60 professionals from across the country to ask them what their college is doing in this area. Your knowledge would increase tenfold, right?! Well, this is what I did all summer and hearing the perspectives of professionals at other institutions definitely helped paint a broader picture of higher education for me. I even realized the value of my SAHE education as several people I spoke with mentioned things we had talked about in class – *in loco parentis* and *Why Are All the Black Kids Sitting Together in the Cafeteria?*, for example. (If you don't know what those are, you definitely will by the end of your first year!) Overall, I am thankful that SAHE provides the freedom and flexibility to choose a practicum experience in support of one's career goals, knowing one doesn't have to work in a collegiate setting to be a contributing member in the world of student affairs."



SAHE 2010 Cohort

09.23.2010 04:23



SAHE 2011 Cohort

# Application Information!

## APPLY ONLINE!

The SAHE Application is now an online process. You can submit your Statement of Purpose, Resume, SAHE Application, and Letters of Recommendation online. To apply, visit our website at:

<http://sahe.colostate.edu/apply.aspx>

*Please read the General Information section prior to applying online. First you must complete the online application to Graduate School. They will send you a CSU ID # via email. You will log into RAM-web to obtain your EID. Once you have your CSU and EID numbers, you will be able to submit your application materials to the SAHE program using the IApply Online link, on our website (address listed above). If you already have a CSU ID # (present or past student), you must still submit the online application to Graduate School first.*

*Please call Kathy Lucas at 970-491-1963 with any questions.*



**Applications Due:  
January 5, 2011!!**

## Assistantship Opportunities:

Graduate assistantships provide students with the opportunity to combine theory and practice while offering financial assistance that includes remission of tuition and a stipend. At 25-30 hours per week, these assistantships allow students to focus on academic coursework and take advantage of other professional opportunities. Assistantships are offered for a 9-10 month period during the academic year (August-May). Some positions require summer employment, which will be compensated through a separate contract and remuneration. Please see the individual position descriptions for more detailed information. Compensation for assistantships includes tuition remission (for both in-state and out-of-state students) and a monthly stipend. To view a list of current SAHE Assistantships, please view our website:

<http://sahe.colostate.edu/assistantship-decriptions.aspx>

## Transcripts:

Request one official transcript from each college or university attended to be sent to the department to which you are applying (Colorado State University transcripts are not required). Official transcripts will need to be mailed and cannot be submitted electronically (only item that cannot be submitted electronically). Please send to:

**Colorado State University  
Attention: Kathy Lucas  
School of Education, Room 209  
Fort Collins CO 80523-1588**

## Student Affairs in Higher Education Certificate:

Student Affairs in Higher Education is offering a new online certificate program. Build your skills and knowledge to design programs that help college students realize their learning and development potential through on-campus experiences with this four-course, online [Student Affairs in Higher Education Certificate](#).

This certificate is a companion to an online master's degree in Student Affairs in Higher Education that is planned to begin accepting applications in Fall 2011. All four courses in this certificate can be applied toward the online or on-campus graduate degrees, though earning the certificate does not guarantee acceptance into the degree program.

